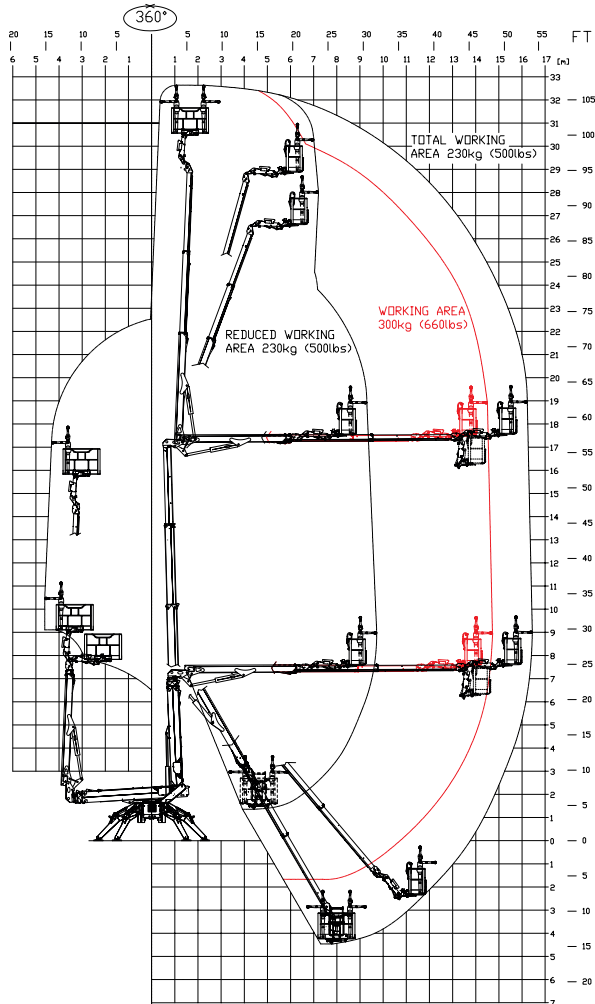
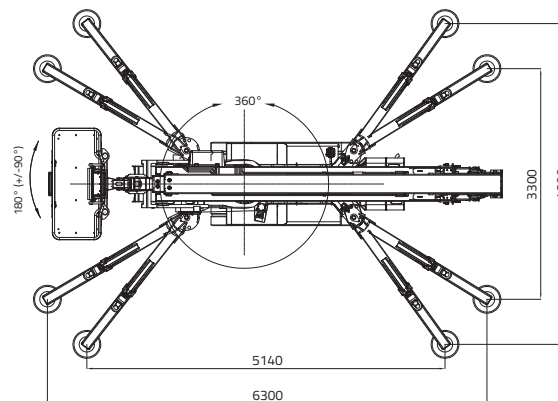
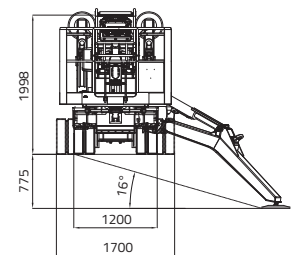
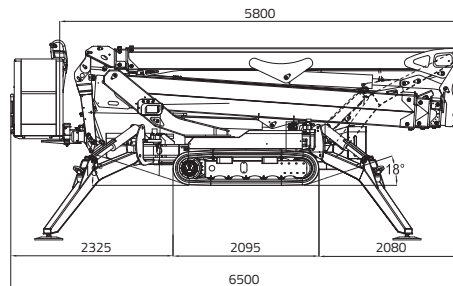


LL33.17 MK2



MAX CAPACITY 300 KG
(2 persons 80x2=160 kg + tool box 140 kg)



32,60 m

14,80 m (300kg)
16,50 m (230kg)

6,50 m

5,80 m

1,99 m

1.600 x 700 x h. 1.100 mm

180° (+/-90°)

16° / 28,7%

1.200 / 1.700 mm

5.000 daN - 4 daN/cm²

Variable stabilization area:
- 4.600 x 5.140 mm (total)
- 3.300 x 6.300 mm (narrow)

Automatic set up system IIIS std.

Remote control

GPRS-GPS

R.A.H.M.

Lithium-ion battery pack 19,2 kWh

Bi-energy (Diesel + Lithium-ion battery pack)

LL33.17 MK2



DIESEL ENGINE

Brand..... KUBOTA
 Type D902 Autorev
 Pistons no. and displacement.....No. 3 / 898 cm³
 Max gross power
 21,6 HP - 16,1 kW @ 3200 rpm
 Electrical start..... 12 volt

LITHIUM-ION SYSTEM

Lithium-ion powered..... 19,2kWh
 Onboard battery charger.....
 220V or 110V+-30V 50-60 Hz
 Autonomy 5/6 h
 Recharge time on flat batteries
 8/9 h (indicative)
 Recharge time to 80% on flat batteries.....
 5/6 h (indicative)

HYDRAULIC PUMPS

Electric motorno. 2 gear pumps

TRACKED UNDERCARRIAGE

Track tensionergrease-filled
 Rollers no. per side 6 + slide

Translation speed with 2nd auto2speed:

- diesel engine 0,8 - 1,8 km/h
 - lithium-ion system..... 0,6 - 1,3 km/h

WEIGHT MACHINE:

- diesel engine 7.815 kg
 - lithium-ion system..... 7.835 kg
 - bi-energy system 7.955 kg

MAX WIND SPEED 12,5 m/s